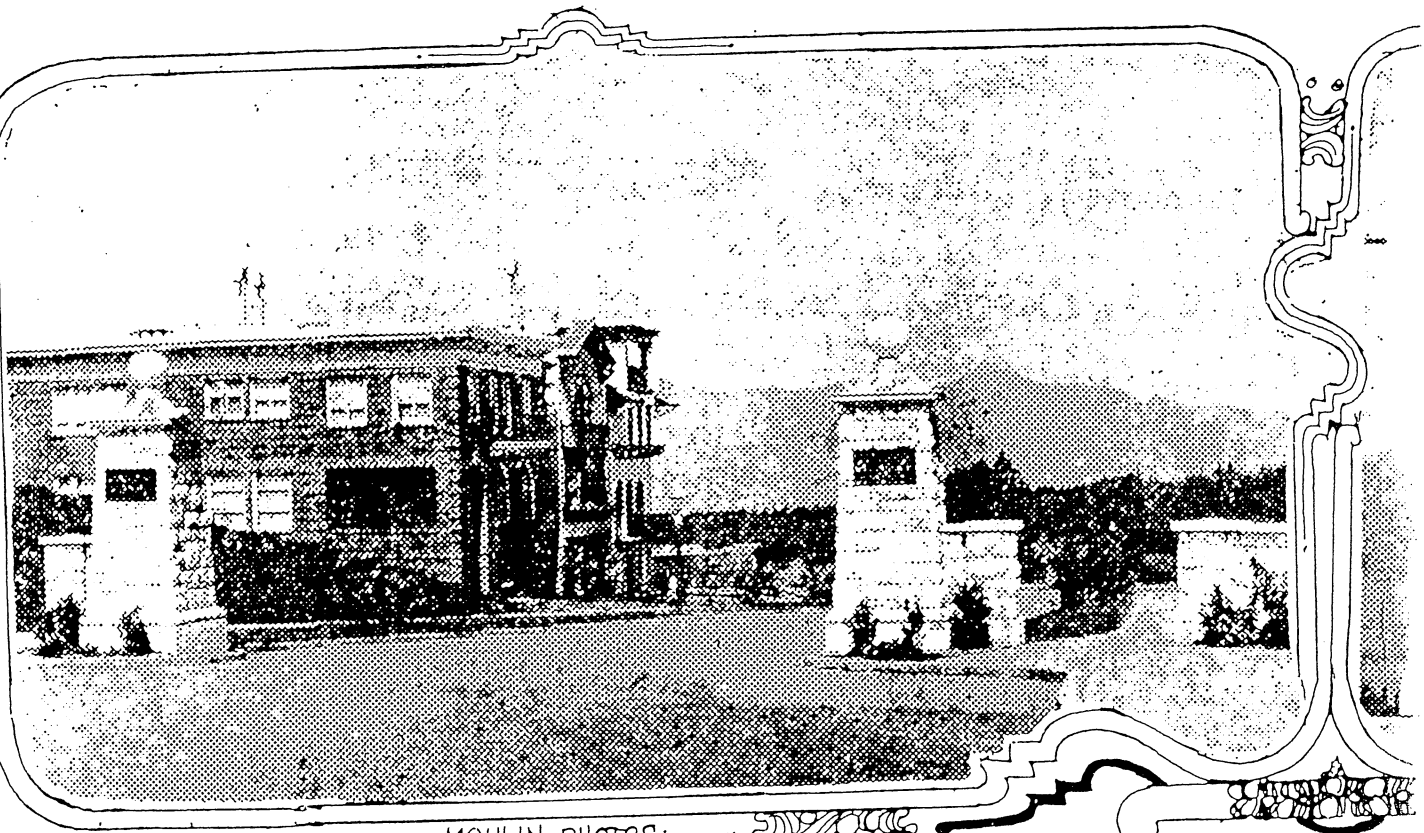


SUNDAY, JULY 6, 1913. p49

San Francisco

Real Estate

TWO TYPICAL NEW ENTRANCE GATES



MOULIN PHOTOS.
Entrance to West Clay Park.

REALTY SALES HOLD A NORMAL ACTIVITY

Holidays Do Not Interfere; Sub-urban Properties All Strong.

Land Company's New Home Soon to Open

West Sacramento Syndicate's Quarters Here to Be Occupied July 15.

On Tuesday, July 15, the West Sacramento Company will open to the public its new home, at the northeast corner of Pine and Kearny streets, which has just been remodeled at a cost of nearly \$15,000.

SUBDIVISION IS OF PATRICK CA

Solano Farms Prom:
Great Future for L
California.